



Data transmission for high efficiency

TL-6700 Auto lensmeter could connect with our Computerized vision tester CV-7800 by Bluetooth connection. When connected with the CV-7800, after a measurement, the result can be transferred from the TL-6700 to CV-7800, to proceed with the next step of subjective refraction.

Specifications

General

Display:	7.0-inch touch screen (800X480)
Printer :	Thermal printer
Interface:	RS232
Power supply:	AC 100 to 240 V, 50/60 Hz, 35W
Dimension:	203X233X471mm
Weight :	4.5KG

Measurement range

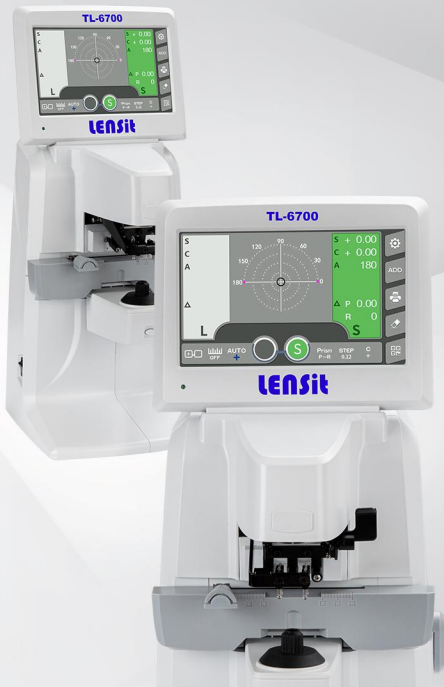
Sphere:	-25D→+25D (step: 0.01/ 0.06/ 0.12/ 0.25D)
Cylinder:	0~±10D (step: 0.01/ 0.12/ 0.25D)
Axis:	0~180° (step: 1°)
ADD:	0~±10D (step: 0.01/ 0.12/ 0.25D)
Prism:	0~20△ (step: 0.01/ 0.12/ 0.25△)
PD:	42~82mm

Designs and specification can be changed without prior notice for the purpose of improvement.

AUTO LENSMETER

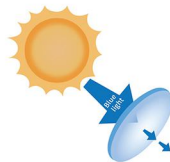
With blue light transmission measurement



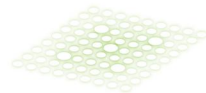


Advanced sensor enable easily and quickly measurement

TL-6700 Auto lensmeter is equipped with advanced Hartmann sensor, providing up to 145 measuring spots, which ensures the measurement is easy and quick. The addition blue light transmission measurement function can well meet the needs of anti-blue lens testing.



Blue light transmission measurement



Hartmann sensor with 145 measurement spots

**Easy to operate and
finish a measurement**



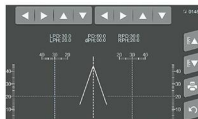
Lens measurement interface

The user friendly interface allows you to measure different type of lens, quickly set relevant parameters, print or clear the data and etc.



UV/Green/Blue light Transmission measurement

The left screen, 100% means that 100% of the UV rays go through the lens as well as 100% of the green light and blue light. Too much blue-violet light (Especially blue light radiation from a light source or screen) is harmful to human eyes.



PD/PH measurement interface

By placing the mounted frame on this interface, the pupil distance and pupil height can be measured intuitively.



7.0-inch tiltable color LCD display

The touch screen with wide tilting angle providing a comfortable operating experience both for standing and sitting.



Improved lens table expanding the measurement range

Sometimes, to measure the near portion is not convenient if it is located on the edge of the frame.

With the improved mechanism of the lens table of TL-6700, the nosepiece could enter into the lens table partially, which makes the measurement of near portion of progressive lens easier without taking the lens table off.



Build-in thermal printer

High-speed printer with quick paper loading design, when replacing printer paper we just need to put the paper roll into the receptacle and close the cover.

Compact design and ergonomic structure

Excellent performance creates high efficiency

